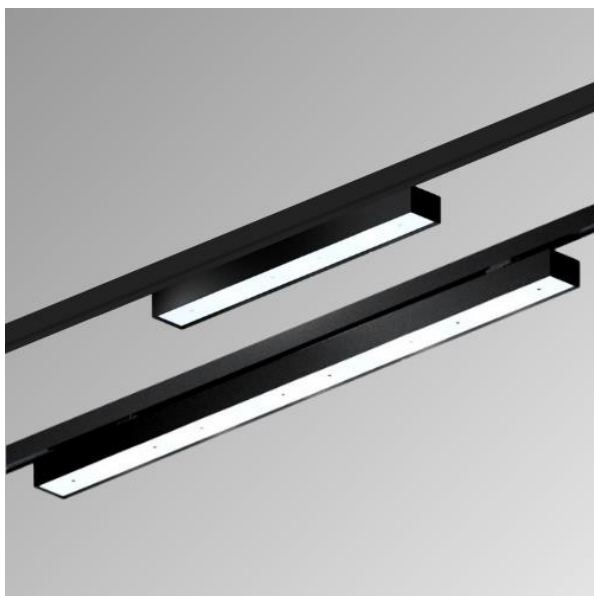


# Eclipse Linear track



**Installation**  
3-circuit track

**Housing Colours**  
White RAL 9010, Grey RAL 9006, Black 9005

**Internal colour**  
Black

**Construction**  
Epoxy powder coated steel  
PMMA optics, Integrated PSU

Protection Class 2, IP20

**Weight:**  
600 version, 2 Kg  
1200 version, 3.6 Kg

**Certification**  
CE, UKCA

**Light source**  
High efficiency LED

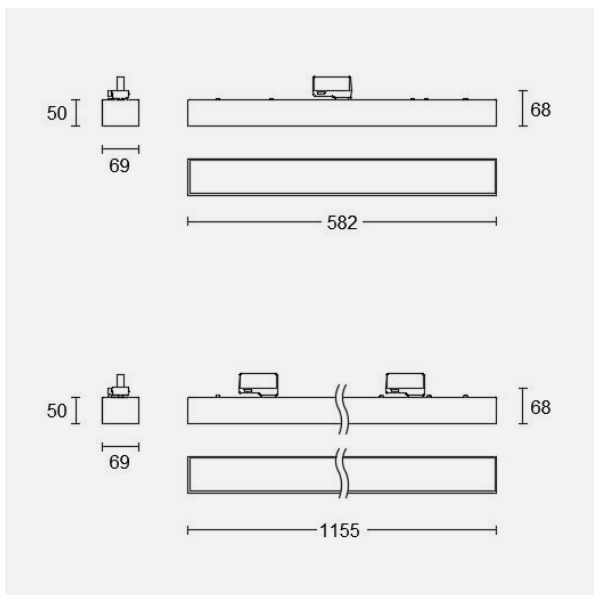
**Beam Angles**  
Diffuse, Extra Wide 110°, Wide 60°, Narrow 30°, Batwing, Wall wash

**Light quality**  
3000K, 4000K  
CRI ≥80 Ra 3 SDCM.  
L80/B10 50000 h

**Lumen categories**  
1400, 1800, 3150, 4250 lumens  
2800, 3600, 6300, 8500 lumens

**Lighting control**  
DALI, 1-10V, Phase, switched

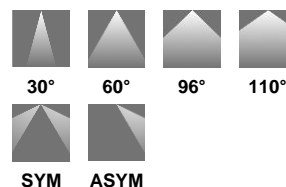
## Dimensions



## Mounting options

Suspension wire  
Surface mount

## Light distribution



## Description

Surface 3-circuit track mount linear down light luminaire with robust steel housing; no visible screws; angular design; standard surface finish options: powder coated in options black (RAL 9005), white (RAL 9010) and grey (RAL 9006), other colours and finishes to special order; two length options: 600 version (582mm) and 1200 version (1155mm); integrated high efficiency energy efficient LED modules; high efficiency PMMA optics; six light distribution options: diffuse, extra wide 110°, wide 60°, narrow 30°, batwing and wall wash; light colour: 3000 K or 4000 K, binning initial Mac Adam ≤ 3 SDCM; CRI options ≥ 80 Ra min. 80% of luminous flux after 50000 operating hours; protection IP20; PC1 220-240V; lighting control options via integrated PSU: DALI, Phase, 1-10 and switched lighting control; photobiological safety according to IEC 62471 risk group RG 0 – no Risk; internal wire in light halogen free; light source replaceable by an authorized professional; control gear replaceable by an authorized professional. Construction from easily separable materials to facilitate convenient life-extending upgrades and end of life recycling.

# Eclipse Linear track

## Product part number nomenclature and example:

Product part number	Product description
EL12T32800RS830BD3	Eclipse Linear 1200, 3-circuit track mounted, 2800 lumens, batwing beam, CRI 80, 3000K, black finish, DALI Dim

EL	12	T3	2800	RS	8	30	B	D3
↓	↓	↓	↓	↓	↓	↓	↓	↓
Product Series	Length (Nom mm)	Mounting options	Lumen Category (Lumens)	Beam angle	CRI (Ra)	CCT (Kelvin)	Body Colour **	Lighting control
EL= Eclipse Linear	06 = 600	T3 = 3-circuit track	1400	N = Narrow	8 = >80	30 = 3000	W = White RAL9010	D2 = 1-10V ***
	12 = 1200	SU = Suspended *	1800	W = Wide	9 = >90	40 = 4000	G = Grey RAL9006	D3 = DALI
			3150	EW = Extra Wide			B = Black RAL9005	Blank = Non-Dim
			4250	D = Diffuse				
			2800	RS = Batwing				
			3600	RA = Wall wash				
			6300					
			8500					

\* Supplied with 3 meter wire suspension

\*\* Other colour and finish options available on request

\*\*\* Only available for the 6300 lumens option