

SPOTLIGHT LED B0V

ECLIPSE 55 REMOTE

The ECLIPSE 55 SPOTLIGHT INTEGRAL is a compact modern spotlight with an integral electronic driver, delivering precise high quality light. Available in three exit lumen ranges various colour tempertures and colour rendering index options. Manufactured to exacting standards and available in White, Grey or Black as standard. Other colours and options to suit custom requirements are available, subject to order quantities.

Applications:

- Retail
- Exhibition
- Architectural
- Hospitality
- Residential
- Entertainment

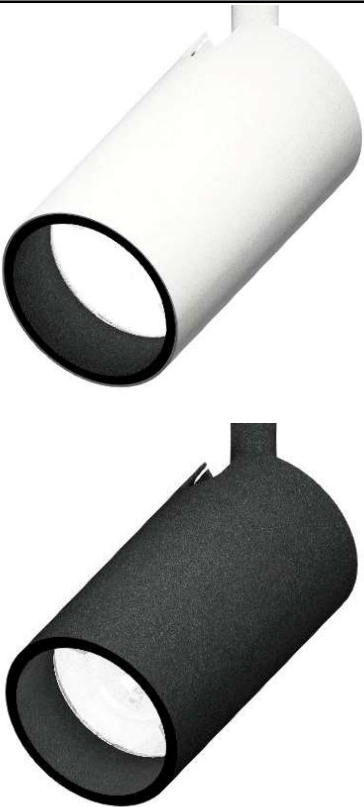
Options: See mounting options on page 2

- Track mounting
- Semi-recessed
- Disc-mount Screw Fix
- Surface Mount Cup
- Hidden fix surface

Accessories: See accessories on page 2

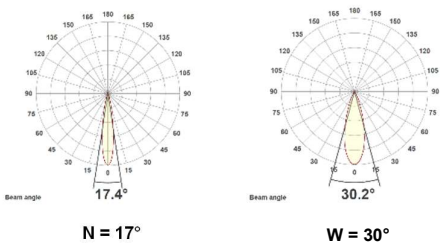
Lumen Output

| CRI CCT | Luminaire output Lumens and Efficiency (in Luminaire Lumens Per Watts) at typical drive current (mA) and forward voltage (V) DC. Chart Based on VERO 10 Narrow Beam / Black Cowl | | | | | |
|---------|--|-------------|--------------|-------------|--------------|-------------|
| | 250mA 24.9V | | 350mA 25.3V | | 500mA 25.9V | |
| | LED watts | Total watts | LED watts | Total watts | LED watts | Total watts |
| | 6.2 | 8.1 | 8.9 | 10.9 | 13.0 | 15.3 |
| 827 | 680 (84) | | 915 (84) | | 1257 (82) | |
| 927 | 561 (69) | | 755 (69) | | 1037 (68) | |
| 830 | 722 (89) | | 972 (89) | | 1335 (87) | |
| 930 | 586 (72) | | 789 (72) | | 1084 (71) | |
| 835 | 739 (91) | | 995 (91) | | 1367 (89) | |
| 840 | 743 (92) | | 1000 (92) | | 1374 (90) | |
| | 700 Average | | 1000 Average | | 1300 Average | |



Black Décor Cowl as standard

Beam Angle: Standard product



Part number nomenclature and examples:

| Part Number | Description |
|------------------------|--|
| EC55SRSRB0V1000N830B | ECLIPSE:55MM:SPOT-REMOTE:SEMI-RECESSED:B0V:1000LM:NAR-BEAM:3K80CRI:BLACK |
| EC55SRHFB0V700N930W-D1 | ECLIPSE:55MM:SPOT-REMOTE:HIDDEN FIX:B0V:700LM:NAR-BEAM:3K90CRI:WHITE:DIM-PHASE |

Nomenclature:

EC = Eclipse Family
55 = 55 mm diameter housing
SR = Spotlight with remote driver
SR = Semi-recessed spring mounted Ø75mm
DMS = Disc mounted screw fixed Ø75mm
SM8 = Surface mounted cup Ø80mm
HF = Hidden fixed Surface mounted cup Ø46mm
B0V = 10 mm LED
700 = 700 Exit Lumens*(averaged across colours)
1000 = 1000 Exit Lumens*(averaged across colours)
1300 = 1300 Exit Lumens*(averaged across colours)
N = Narrow beam 10 - 20 degrees
W = Wide beam 30 - 50 degrees
827 = 80CRI 2700K***
927 = 90CRI 2700K***
830 = 80CRI 3000K***
930 = 90CRI 3000K***
835 = 80CRI 3500K***
840 = 80CRI 4000K***
W = RAL9010 Pure White**
G = RAL9006 Grey Silver**
B = RAL9005 Jet Black**
D1 = Dimmable Phase
D3 = Dimmable DALI
D4 = Dimmable Casambi

* Refer to lumen output table for LED options (all lumens are exit lumens).
** Other finishes available to special order.
*** Other colour options are available on request. Please contact our sales team to discuss your requirements.

The Accessory range enables you to adapt the standard product, and optimise the perfect effect for your application. All accessories can be pre-assembled to each individual product, or ordered as a separate item so to customise an existing installation. Please specify clearly when ordering.

Accessories:

- Honeycomb
- Elongation lens
- Spreader lens
- Frosted lens
- Colour filter options

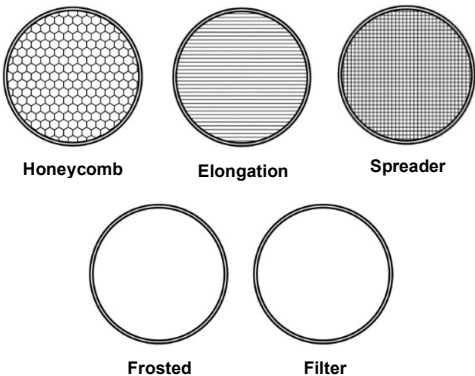
Honeycomb: For reduced glare.

Elongation Lens: For spreading the beam in one direction.

Spreader lens: For creating a wider light beam.

Frosted lens: For creating a softer beam edge.

Filter Lens: For enhancing the display.



Part number examples: Accessories purchased separately

| Part Number | Description |
|-------------|--------------------------------|
| AC55HC | ACCESSORY:55MM:HONEYCOMB |
| AC55EL | ACCESSORY:55MM:ELONGATION LENS |

Optical Accessory options:

AC = Accessory
55 = For 55mm Lens
HC = Honeycomb
EL = Elongation Lens
SL = Spreader Lens
FL = Frosted Lens

All above items are supplied pre-assembled within a Black plastic carrier as standard.

Other colour options are available on request. Please contact our sale team to discuss your requirements.

Mounting options:

